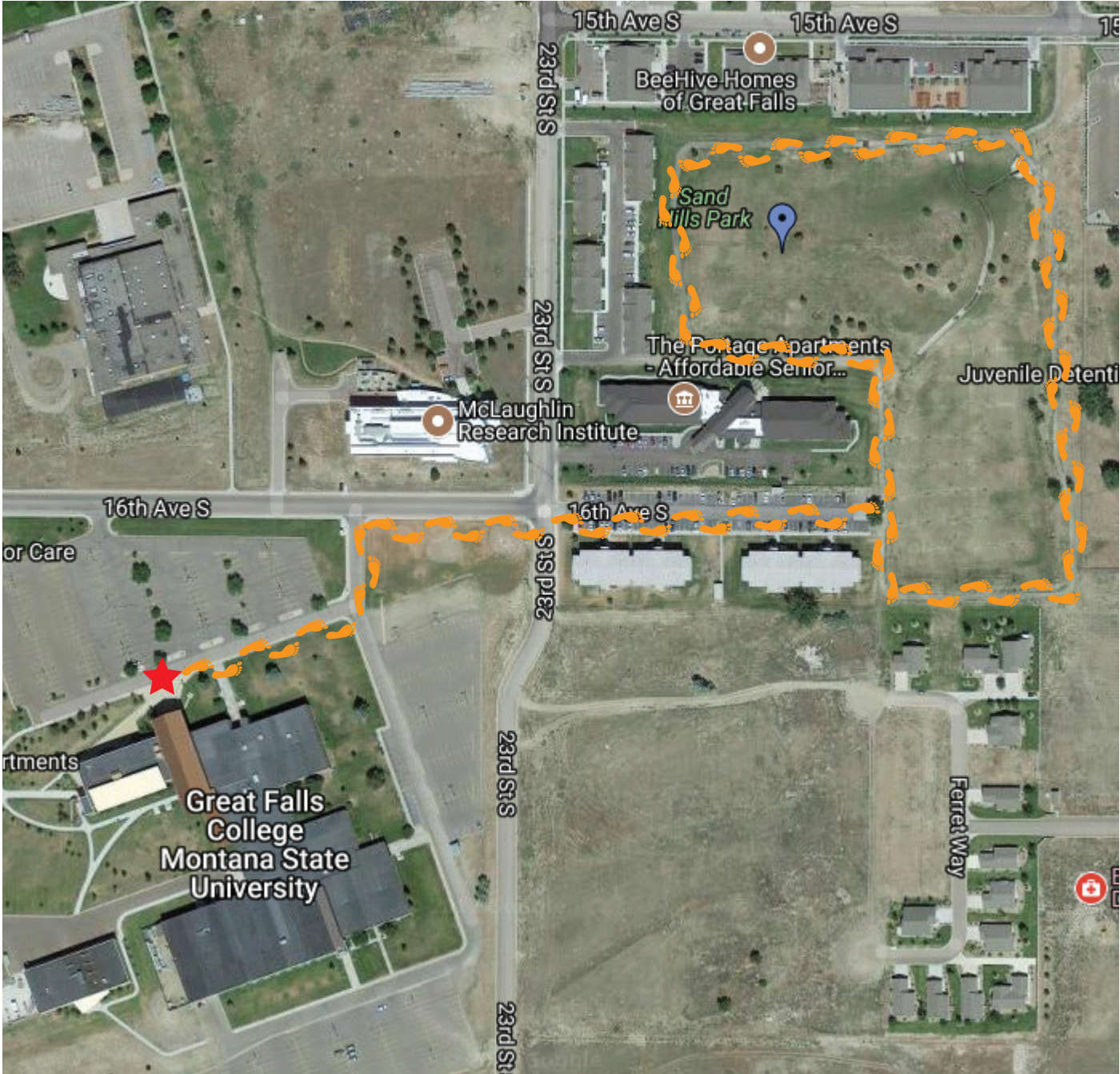


GOT 20 MINUTES?



SAND HILLS* PARK LOOP

TIME: 20 MINUTES

LENGTH: 1 MILE

*Sand Hills Park is a Great Falls City Park. There is a paved loop path through the park. To reach Sand Hills Park, cut through the parking lot of the apartment buildings located on 16th Ave and 23rd Street.

MAP KEY

- ★ **START AND FINISH**
- 👣 **WALKING ROUTE**



**GREAT FALLS
COLLEGE**
MONTANA STATE
UNIVERSITY